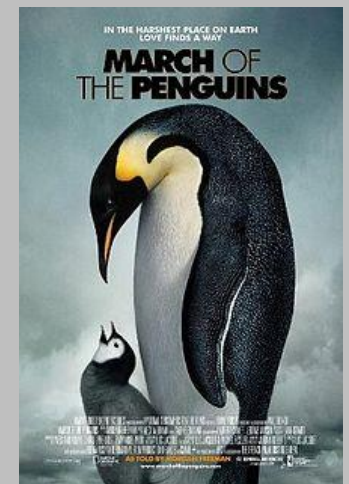
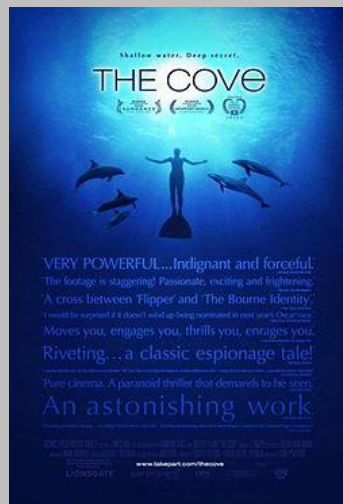


Documentary Film



Defined in 1926:

*The creative treatment of
actuality.*

Documentary films engage viewers by showing them some aspect of the real world.

A documentary filmmaker captures and organizes visual images and sound to convey that real world situation.

As with fiction films, documentary filmmakers make choices involving structure, cinematography, sound, and editing.

These choices influence how audiences interpret the events onscreen.

“...a documentary film supports an underlying argument, assertion, or claim about the historical world.”

Therefore, documentaries have a:

- Thesis (or at least, a guided theme)
- That is attempted to be proven true with evidence and commentary